

smartEDDY® 4.0 Test Software Overview

The combination of SE Systems' Test Software and smartEDDY 4.0 eddy-current test instrument provides powerful, multi-frequency capability along with vector impedance or reflectance, direct or remote field functionality. In addition to controlling the instrument, the Test Software performs real-time digital data analyses and includes display, decision, store and replay features not available elsewhere.

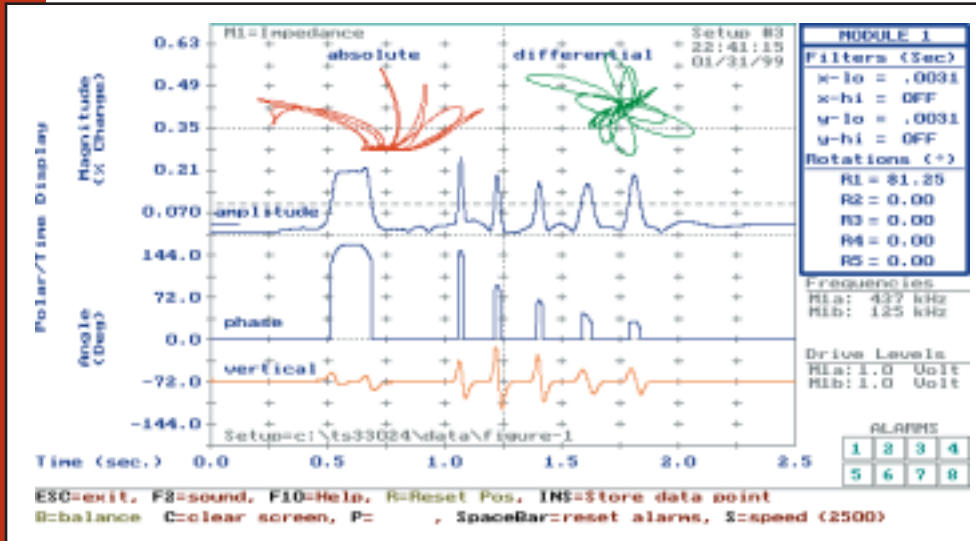


Figure 1 Multiple Metrics and Displays.

▶ Cutting Edge Real-Time Data Processing Revolutionizes Testing Performance

Typical eddy-current inspection instruments can only produce and respond to raw voltages. On the other hand, smartEDDY performs advanced real-time data analyses. These include impedance, four-dimensional vector, time base, spectral, correlation, lift-off correction and continuous phase-angle noise suppression. Additionally, smartEDDY performs eight simultaneous metrics and 32 threshold analyses. These sophisticated analyses permit detection and measurement not possible by traditional means.

▶ Digital Records Enable Better Decisions And Control

Data is easily recorded for quality records or future smartEDDY analysis. Any number of inspection, display and processing set-ups can be stored and recalled. Additionally, set-ups can include custom on-screen instructions. The advanced software converts data to a text format, which can be imported into any number of third party or custom analysis programs.

▶ smartEDDY Operates Hassle-Free

Operation is made easy by using the simple, on-screen instructions. Start-up is also a simple matter of turning the power on. Once on, the instrument automatically proceeds through a brief start-up sequence that includes a programmed diagnostic check. Depending upon the pre-selected start-up sequence, the smartEDDY main screen appears or the unit begins inspecting according to pre-selected set-up, data processing and decision directions.

Sophisticated production-line tests can be performed in harsh environments with no operator intervention during the inspection process or start-up of the instrument. In fact, no monitor or keyboard is required for most production tests. And, the smartEDDY can be controlled from a remote panel, computer or PLC.

▶ No Other Eddy-Current Test System Is As Fast, Sensitive, Flexible and Proven

SE Systems structured the smartEDDY Test Software so that it permits easy, test programming that meets your special needs. It represents a culmination of over twenty years of program evolution in response to customer needs. As a result, there is no other eddy-current test system that's as fast, discriminating, flexible and proven as smartEDDY.

► **SmartEDDY 4.0 Test Software Comes in Two Configurations**

Standard Test Software includes the following features:

- 16 bit data
- Auto-store to RAM
- 8 user-defined metrics
- High-pass digital filters (four-pole)
- Low-pass digital filters (four-pole)
- Vector analysis
- Magnification to 100,000X
- Learn functions
- LAC (lift off amplitude correction)
- CPANS (continuous phase angle noise suppression)
- Data replay
- Manual parameter store & retrieve
- Manual data store & retrieve
- Insert data to ASCII file
- Plane display
- Cartesian time display
- Split screen display

A data sheet entitled "smartEDDY 4.0 Standard Test Software" is available with more detail on the features and operation of this software.

Advanced Test Software includes important enhancements:

- Auto data and defect data store to disk
- Parametric analysis
- ASCII file generator
- Polar/time display
- Cartesian frequency scan display
- Advanced remote control

A data sheet entitled "smartEDDY 4.0 Advanced Test Software" is available from SE Systems with more detail on the enhancements provided by this software.

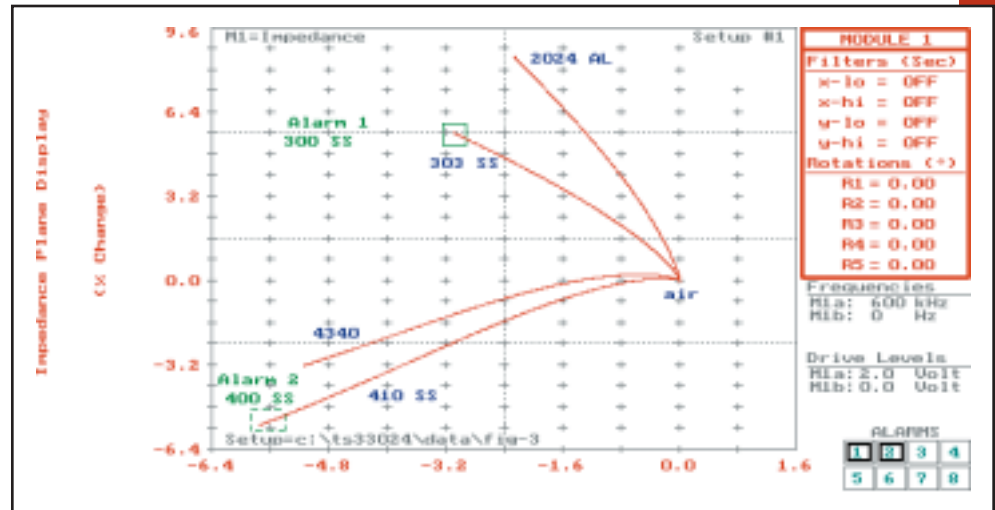


Figure 2 Stainless Steel Sorting

SE Systems, Inc.

26203 Production Ave., Suite 10
 Hayward, CA 94545
 (510) 293-3000
 FAX (510) 784-0810
www.smarteddy.com

Specifications subject to change without notice.
 Issued 09/03
 smartEDDY is registered trademark of SE Systems, Inc.
 © Copyright 2003 SE Systems, Inc. • Printed in U.S.A.